



Learning Disabilities: Learning from the Source

Want to know more about learning disabilities? *Learning Disabilities: Learning from the Source* portrays the voice of experience. Eight diverse people with learning disabilities are profiled. Each person effectively communicates wisdom, shares memories, experiences, goals, dreams and smiles as they invite you into their lives. Two staff, an instructor and case manager, model their knowledge and professionalism as they assist people with learning disabilities in school and at work.

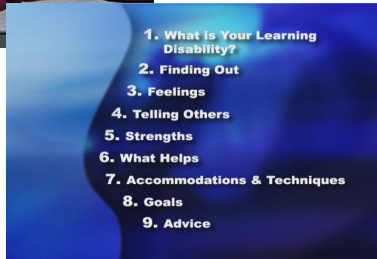
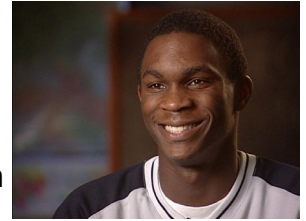


Commissioned by the National Institute for Literacy (NIFL), this video helps train professionals to recognize learning disabilities, as well as helping those who have learning disabilities understand they're not alone.

Workforce Development Council of Seattle-King County (WDC) planner Beth Blanchard said "this project grew out of successful staff trainings across the country focusing on learning disabilities in an employment setting."



Professionally produced by *Mediaward* at the Instructional Broadcast Center of the Seattle Public Schools in collaboration with WDC staff Dan Fey and Beth Blanchard, the video is visually rich, including photos and video clips that enhance the in-studio shots. Sound clarity assures each voice is well heard and understood and graphics are lively and varied.



Soon to be released, second and third videos will feature Dr. James Koller of the University of Missouri-Columbia presenting a training on formal learning disabilities assessment. In addition, Shelley R. Jackson of the Office for Civil Rights discusses federal guidelines on prohibition of disabilities-related discrimination.



"The personal interviews, the professional editing and the lively graphics really make these videos stand out," said Blanchard. "We're so excited about being able to reach an even wider audience with this important information."

Total running time: 56 minutes

Name _____

Mailing Address _____

City _____ State _____ Zip Code _____

Area Code & Phone Number _____

Item/Format	Quantity	Price Each	Total
LD: Learning from the Source VIDEO TAPE		\$40.00	
LD: Learning from the Source DVD		\$40.00	
Order Total			

Send to/make checks payable to:

Workforce Development Council of Seattle-King County
2003 Western Ave Ste 250
Seattle WA 98121-2162

e-mail questions to: bblanchard@seakingwdc.org

Forms with Purchase Orders may faxed to: 206.448.0484



Form of Payment	
<input type="checkbox"/>	Cash (to representative)
<input type="checkbox"/>	Check (enclosed)
<input type="checkbox"/>	P.O. (copy enclosed)